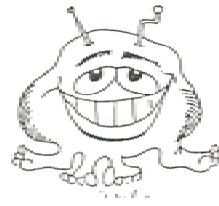


## Create Your Own Dichotomous Key

Congratulations!!! You are part of a collaborative scientific team that has just discovered numerous new species in the Roanoke Valley. You must now decide, within your collaborative group, how you are going to classify and name your organisms. You will need to create your own dichotomous key.



I. Closely examine the new species. What characteristics do you think will be important in classifying these critters?

_____ Number of eyes _____	_____
_____	_____
_____	_____
_____	_____
_____	_____

II. Use characteristics of your choice to create your own dichotomous key. *Remember: dichotomous keys always provide two options at each branch!* **Use the other handouts to do this.**

III. Replace the critters' number with a Latin name. Many Latin words (for body parts, etc.) have been written on the board for you. Write the Latin names below the picture of the critter.

IV. Throughout this exercise, what was the most difficult to do **and** why? \_\_\_\_\_

\_\_\_\_\_

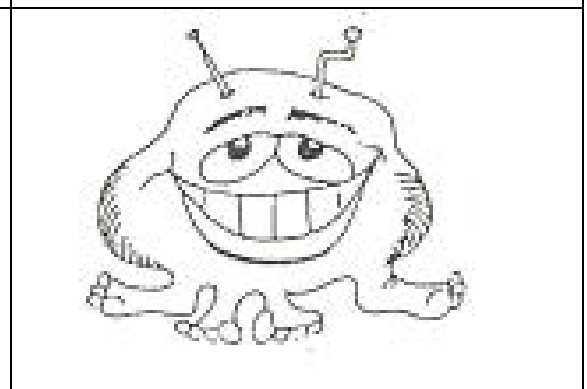
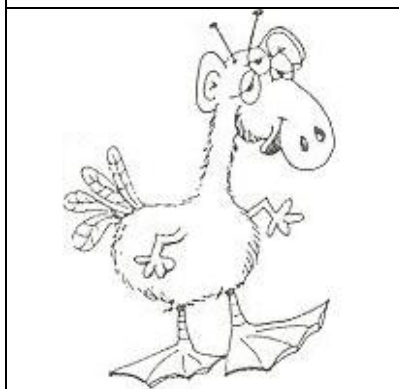
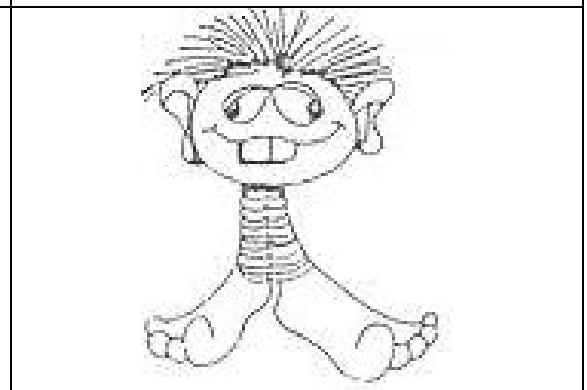
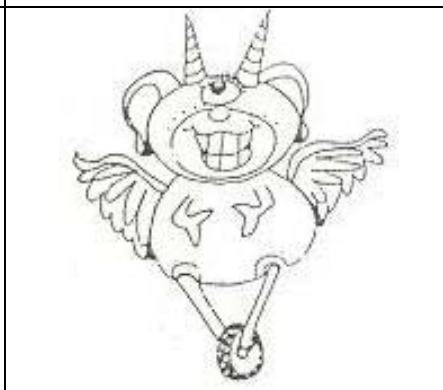
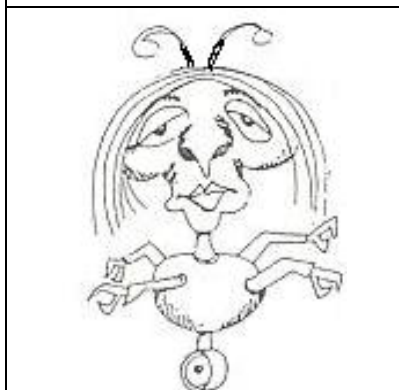
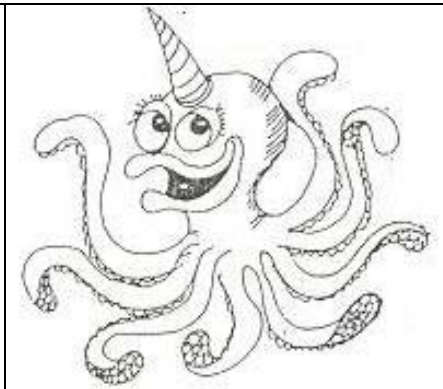
\_\_\_\_\_

V. Do you think this would also be difficult for real-world scientists? Why or why not? \_\_\_\_\_

\_\_\_\_\_

A. Construct a dichotomous key to classify these creatures.

B. Provide a scientific name for each of these creatures based on their characteristics.



1a		
1b		

2a		
2b		

3a		
3b		

4a		
4b		

5a		
5b		

6a		
6b		

7a		
7b		

8a		
8b		

9a		
9b		

10a		
10b		

## COLORS

black	nigr-
blue	cerule -
brown	brunne -
gray	glace -
purple	purport -
red	rubi -
white	albi -
yellow	flav -
orange	auranti -

## SHAPE

wide	lati -
round	circuli -
coiled	spirali -
curled	crisp -
cylindrical	cyliind -
narrow	angusti -
pointed	accuminat -
split	dicho -
square	quadrat -
straight	recti -
thick	crassi -
triangular	delt -
wavy	undulat -

## TEXTURE

bare	nudi -
bearded	barbat -
hairy	hirsut -
rough	scabr -
smooth	glabr -

## MISCELLANEOUS

beautiful	bell -
color	chromato -

## NUMBERS

one	mono - uni -
two	bi -
three	tri -
four	quadri -

## TYPES OF ANIMALS

animal
bird
fish
insect
reptile
snake
worm

## ANIMAL STRUCTURES

ankle
arm
back
belly
brain
bristle
cheek
chest
claw
digit
ear
eye
eyelash
eyelid
face
foot
forehead
hair
hand
head
horn
knee
leg
lip
mouth
neck
nose
scale
skull
tail
tooth
wing