



# "The Incredible Journey"

While water does circulate from one point or state to another in the water cycle, the paths it can take are variable. You will each be one drop of water on its own individual path through the water cycle.

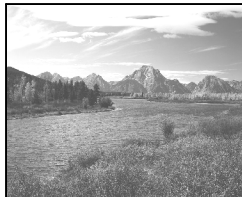
## DIRECTIONS:

1. **STAR** the part of the cycle where you are starting at.
2. **ROLL** the die, **READ** the part for the number you rolled, then **MOVE** to the corresponding station. **DRAW** an arrow from your original location to your next location on the diagram below.
3. If you end up in the same place as before, draw an arrow to and from that same box.
4. Repeat this process **15** times!

CLOUDS



RIVERS



OCEAN



ANIMALS



PLANTS



GLACIER



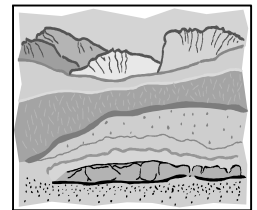
LAKES



GROUNDWATER



SOIL



## Follow-up Questions

1. Was there any particular station you spent a lot of time at? If so, which one? \_\_\_\_\_
2. If so, why do you think this is (i.e. how does it relate to the real-world)? \_\_\_\_\_  
\_\_\_\_\_
3. Was there any particular station that you got "stuck" in? \_\_\_\_\_
4. If so, why do you think this is (i.e. how does it relate to the real-world)? \_\_\_\_\_

